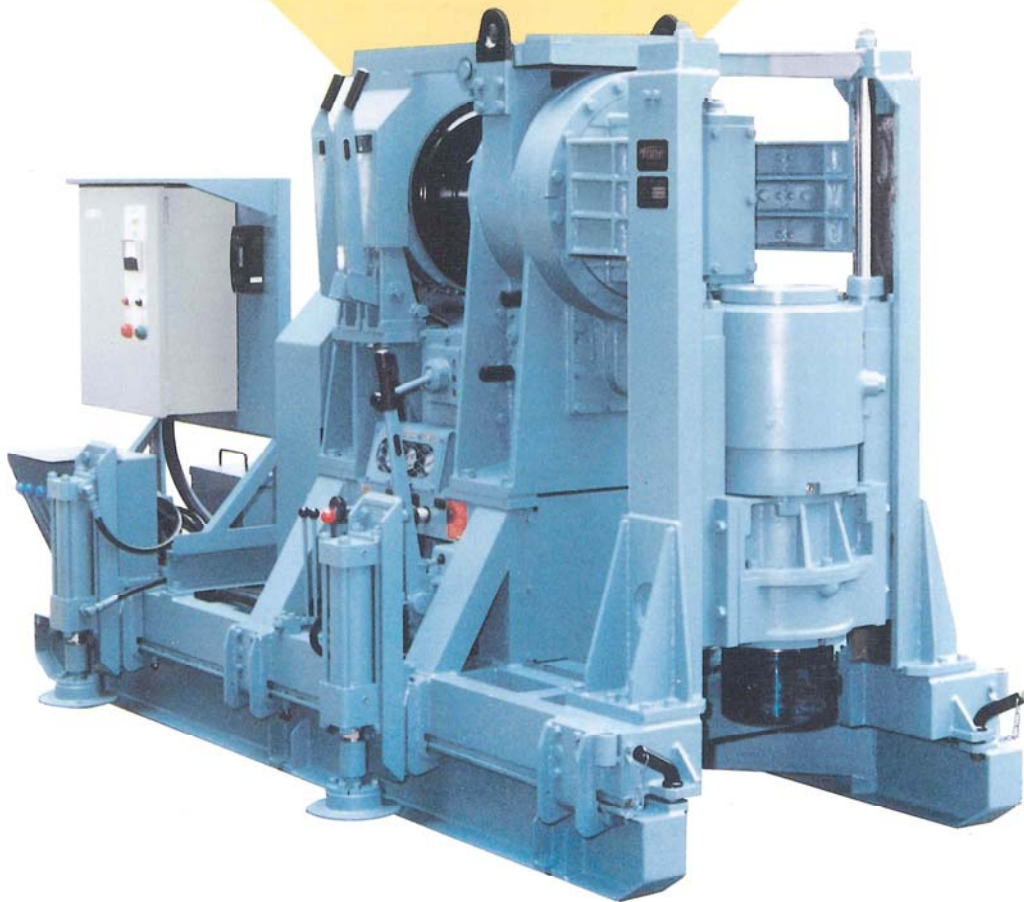


LOW HEAD TYPE

TBM-88LH-150
TBM-88LH
Drilling Machine



* Out-riggers shown in the above picture are optional.

Low position of drill head with hydraulic and manual chucks ensures safety and effective operation



TOA-TONE BORING CO., LTD.

Features

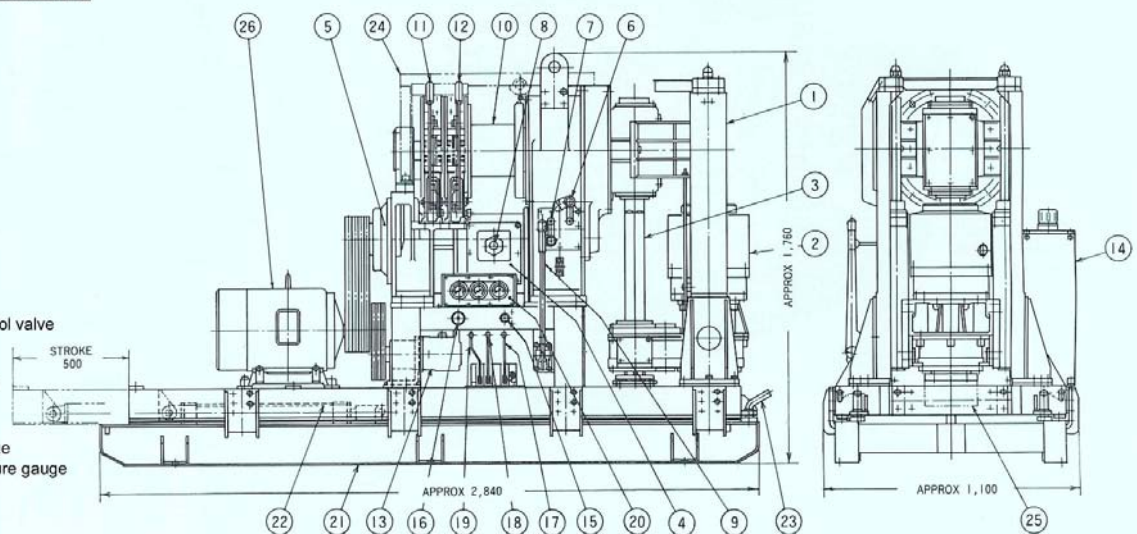
- Standard hydraulic chuck enables safety and efficient chucking work by lever operation to improve drilling rate.
- Low position of rotary head with 1200mm height above drill base allows safety and shorter connection of drill rod.
- Compared with conventional spindle type drilling machine, a longer drill rod can be used at the space with limited head room, resulting in better drilling rate.
- Out-riggers, lower manual chuck and platform are available as option.

Technical Specifications

Capacity		Hoist		
	Hole Dia.(mm)	Depth (m)	Type	Planetary gear, hand brake
For Large Hole Drilling for Foundation	1000	80	Drum size (mm)	Length: 210 Dia: 220
	1200	50	Rope size (mm)	14
	1500	40	Drum capacity (m)	85
For Water Well Drilling	200	500	Rope speed (m/min.)	14, 29, 48, 70
	400	300	Single line pull (kN)	39.20
	500	200	Hydraulic Pump	
Swivel Head Assembly	TBM-88LH-150	TBM-88LH	Type	Variable volume, vane
Type	Twin hydraulic cylinder		Discharge volume (L/min.)	0 – 45
Spindle I.D. (mm)	150	93	Working pressure (MPa)	0.98 – 6.07
Spindle stroke (mm)	450		Max. pressure (MPa)	10.29
Angle range	For vertical only		Frame	
Spindle speed (min ⁻¹)	A series: 30, 60, 100, 145 R24		Type	Skid base with slide cylinder
	B series: 50, 100, 170, 240 R40		Slide stroke (mm)	500
Max. thrust (kN)	71.54		Power Unit	
Max. balance (kN)	59.78		Electric motor	18.5 kW-4P
Transmission			Diesel engine	30 – 40 PS/1800 min ⁻¹
Type	Sliding gear		Weight (kg)	TBM-88LH-150 TBM-88LH
Type of clutch	Single plate dry disc		Weight w/o power unit (kg)	3,400 3,150
Input drive shaft rpm (min ⁻¹)	1,300		Dimensions (mm)	L2840 x W1100 X H1760

NAME OF COMPONENTS

1. Frame
2. Hydraulic chuck
3. Drive shaft
4. Transmission
5. Clutch
6. Spindle gear shift lever
7. Drum gear shift lever
8. Change lever
9. Clutch lever
10. Hoist drum
11. Hoist lever
12. Brake lever
13. Hydraulic pump
14. Hydraulic tank
15. Speed control valve
16. Hydraulic pressure control valve
17. Hydraulic chuck lever
18. Feed change lever
19. Slide base change lever
20. Gauges
 - Feed pressure gauge
 - Balance pressure gauge
 - Hydraulic chuck pressure gauge
21. Base
22. Slide cylinder
23. Slide stop pin
24. Platform (option)
25. Manual chuck (option)
26. Prime mover



TOA-TONE BORING CO., LTD.

3-7 Roppongi 7-chome, Minato-ku, Tokyo 106-0032, Japan
 Phone: 81-3-5775-3921 Fax: 81-3-5775-3967