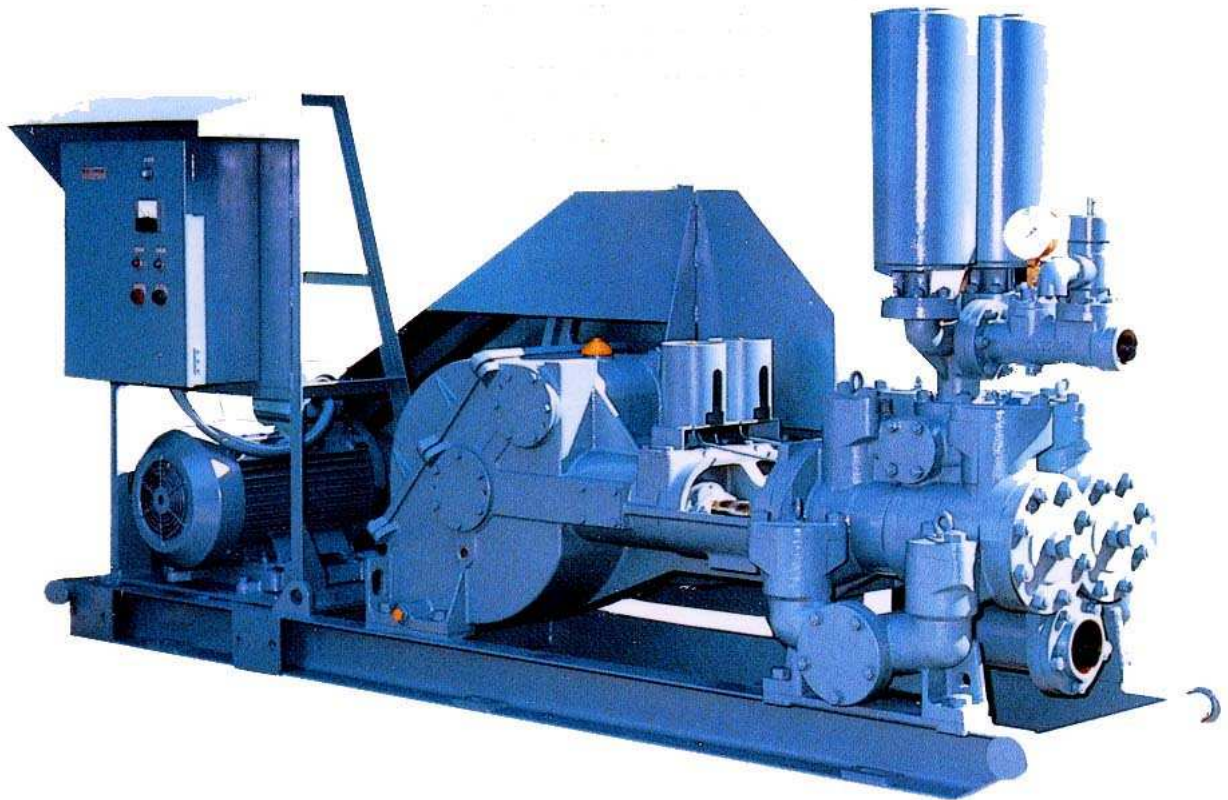


DRILLING FLUID CIRCULATION & GROUT PUMP

NP-700



"NP" SERIES HEAVY DUTY PUMP DESIGNED FOR WIDER DRILLING APPLICATIONS IN MINING, DEEP WATER WELL AND CONSTRUCTION FIELDS REQUIRING HIGH PRESSURE AND LARGER DISCHARGE VOLUME WITH RELIABLE PERFORMANCE



TOA-TONE BORING CO., LTD.

SPECIFICATIONS FOR NP-700 PUMP (STANDARD TYPE)

Type Duplex double acting piston.

Cylinder bore (mm)	140(5-1/2")		127(5")		114(4-1/2")		102(4")		89(3-1/2")	
Discharge volume (L/min)	730	615	600	505	480	405	375	315	280	235
Max. pressure (kg/cm ²)	19	22	23	27	29	34	37	43	49	58
No. of strokes	95	80	95	80	95	80	95	80	95	80
Revolution of driving	470	395	470	395	470	395	470	395	470	395
Shaft (rpm)										

Length of stroke (mm) 130

Type of valve Ball or conical

Suction hose size (mm) 100 or 75

Delivery hose size (mm) 65 or 50

Required input (kW) 30 – 4P

Weight (w/o power unit) (kg) . . . 1,600

Dimensions (mm) 3,040 (L) x 830 (W) x 1,575 (H) (with electric motor)

SPECIFICATIONS FOR NP-700 PUMP (TRANSMISSION TYPE)

Cylinder bore (mm)	140 (5-1/2")				127 (5")				114 (4-1/2")				102 (4")				89 (3-1/2")				
	High		Low		High		Low		High		Low		High		Low		High		Low		
Revolution of driving shaft (rpm)	Q	P	Q	P	Q	P	Q	P	Q	P	Q	P	Q	P	Q	P	Q	P	Q	P	
Discharge (Q:L/min) & Pressure (P: kg/cm ²)																					
Gear shift of transmission	5	735	19	615	22	605	23	505	27	485	29	405	34	375	37	315	43	280	49	235	58
	4	520	22	435	22	425	27	355	27	340	34	285	34	265	43	220	43	200	58	165	58
	3	315	22	265	22	260	27	215	27	205	34	175	34	160	43	135	43	120	58	100	58
	2	175	22	145	22	140	27	120	27	115	34	95	34	90	43	75	43	65	58	56	58
	1	105	22	85	22	85	27	70	27	70	34	59	34	54	43	46	43	41	58	34	58

* Indicated data are theoretical.

Remarks: We have the right to change the specifications without prior notice for continuous improvement.



TOA-TONE BORING CO., LTD.

3-7 Roppongi 7-chome, Minato-ku, Tokyo 106-8552, Japan

Phone: 81-3-5775-3921 Fax: 81-3-5775-3967